



 **Organa**[®]
International

Excellence Delivered...

**WHO
WE ARE...**

We have developed recognized expertise in sheet metal works. Today, ORGANA keeps on developing cutting-edge technologies and constantly brings innovations to its products and designs. While developing the latest technologies for future products, we meet the emerging needs. Satisfied customers are proof of the quality and reliability of Organa International.



Bio Safety Cabinet

Organa Microbiological Safety Cabinets belong to the latest generation of laminar airflow systems manufactured by **Organa International**, in which the choice of materials of construction of the highest quality guarantees conformity to the strictest safety standards.

Organa Class II A2 are Microbiological Safety Cabinets - designed and built to performance requirements of the EN-12469:2000 European Standard and NSF/ANSI 49 American Standard, with 70% of the air re-circulated via the main Class H14 HEPA/ULPA filter within the cabinet, whilst the remaining 30% is discharged through an exhaust Class H14 HEPA/ULPA filter.

Organa Class II B2 are Microbiological Safety Cabinets with 100% of the air exhausted as per NSF/ANSI 49; they are designed to provide operator, product and environmental protection and to be vented outside the building without recirculation.

APPLICATION

Organa Class I & II A2: Pharmaceutical industries, low levels of power consumption, CO2 emissions and the lowest noise levels

Organa Class II B2: Microbiology, Virology, Hematology, Cell culture, Genetics, Handling of hazardous agents to human beings or animals

REAGENTS- SAFETY CABINET

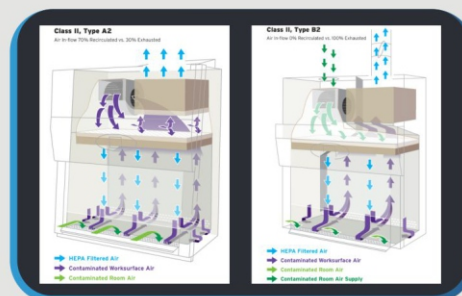
- ✓ Powder coated cold rolled mild steel
- ✓ Double door construction with internal shelves
- ✓ Fixed height with casters
- ✓ Design can be customized as per requirement

KEY FEATURES

- ✓ Safe and ergonomic design
- ✓ Double wall construction for air circulation
- ✓ Corrosion resistant powder coated exterior body
- ✓ Stainless Steel 304 Interior work area
- ✓ Adjustable Front Cover – Unbreakable Acrylic Sheet 6mm
- ✓ Counter Loading Mechanism for Front Cover adjustment
- ✓ Maintain a minimum average inflow velocity of 100 ft/min (0.51 m/s) through the work access opening
- ✓ Pre-Filter- "5" Micron made of washable synthetic material
- ✓ HEPA Filter H14, with an efficiency rating better than 99.99% for 0.3µ
- ✓ Differential pressure gauge
- ✓ Time elapsed meter
- ✓ Germicidal UV lamp
- ✓ Fluorescent LED Light fitting
- ✓ Power Requirement: 220/50 Hz single phase
- ✓ Internal Work Area dimensions available (W x D x H):
ORG-BSC-STD01 (42" x 30" x 24")

CUSTOMIZATION

- ✓ Customizable to meet specific customer needs





Laminar Flow Cabinets

Organa Laminar Flow Cabinets (manufactured pursuant to Standard EN-1822) are the premium selection for the discerning researcher, offering a combination of value, high quality construction, low operating noise levels, and a wide product range to suit all budgets.

Organa Laminar Air Flow Cabinet works on laminar flow Principle involves double filtration of air through coarse Pre Filters (Up to "5"microns) and Hepa filters (down to "0.3"microns) for filtration Of Biological & Particulate contaminants. A constant unit-directional air Flows either horizontally or vertically, is drawn from atmosphere or passed through pre and Hepa filters on to the work surface.

APPLICATION

- ✓ Laboratory food industries in general
- ✓ Transfer of drugs in the pharmacy department
- ✓ Hematology and clinical analysis
- ✓ Micro propagation, Plant cell cultures, Water quality control, manufacturing of electronic devices

Support Stands (on demand)

- ✓ Fixed height, available 810 mm
- ✓ With casters

KEY FEATURES

- ✓ Smart design
- ✓ Powder Coated Mild Steel body with Stainless Steel table top
- ✓ Front protective Acrylic sheet
- ✓ Pre-Filter- "5" Micron made of washable synthetic material
- ✓ Imported HEPA Filter, with an efficiency rating better than 99.99% for 0.3μ
- ✓ Motor blower with static and dynamically balanced
- ✓ Germicidal UV lamp
- ✓ Fluorescent LED Light fitting
- ✓ Compact Body mechanical timer for indication of Filters life
- ✓ Utilities Connections for Gases & Water
- ✓ Internal Work Area dimensions available (W x D x H):

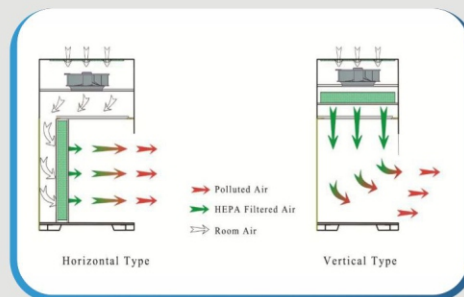
LF-B01 (24" x 22" x 23")

LF-B02 (36" x 22" x 23")

LF-B03 (48" x 22" x 23")

CUSTOMIZATION

- ✓ Customizable to meet specific customer needs





Organa Fume Hoods

Organa Fume Hoods are designed to contain an exhaust toxic, obnoxious, pungent smelling gases to protect personnel and equipment in the laboratories. A motor driven dynamically balanced blower with minimal vibration and noise level creates negative pressure and exhausts contaminated air from work area and throws the same in high-up atmosphere through ducting.

Ducted vs Ductless

Ducted Fume Hood functions by drawing laboratory air into the fume cupboard, then after diluting the contents, discharge it through a duct to the environment.

Ductless Fume Hood draws air into the fume cupboard then after passing through Hepa-Filter exhaust it back into the laboratory.

Support Stands (on demand)

- ✓ Fixed height, available 810 mm
- ✓ With casters

KEY FEATURES

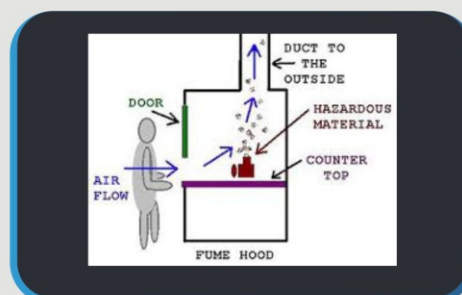
- ✓ Computational Fluid dynamics design
- ✓ Combined single/ double wall construction
- ✓ Powder coated corrosion resistant Mild Steel body with Stainless Steel worktop
- ✓ Adjustable height front protective Acrylic sheet through counter load mechanism
- ✓ Motor blower with static and dynamically balanced
- ✓ Utilities connection for Gases & Water
- ✓ Exhaust system for Air flow
- ✓ Cap protective universal electric socket
- ✓ Internal Work Area dimensions available (W x D x H):

FH-B01 (24" x 22" x 23")

FH-B02 (36" x 22" x 23")

CUSTOMIZATION

- ✓ Customizable to meet specific customer needs





Stability Chamber

ESC-400L-TCH is designed to meet the ever increasing requirements for scientific and laboratory research. **ESC-400L-TCH**, an advanced engineered design incorporates the latest in cabinet, refrigeration, temperature control and monitoring features. Provides energy efficient, convenient, safe and reliable performance for optimal temperature environments necessary for a wide range of life science, pharmacy, biological, medical, clinical and industrial applications.

ESC-400L-TCH units employ a programmable controller to maintain the temperature and humidity with accuracy of $\pm 2^{\circ}\text{C}$ and $\pm 5\%$ RH respectively. The cabinets utilize electrically operated heaters to warm the cabinets in the heating mode. Built in data logger with storage capacity of 6000 readings approximate, alarm system & printer connectivity are more distinguish features of **ESC-400L-TCH**.

Technical Specification

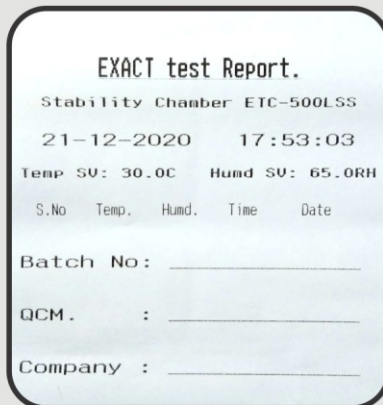
- ✓ Voltage supply: 230V AC 50HZ 1 phase
- ✓ Maximum fuse size: 16A
- ✓ Total Amp draw: 7.5 A
- ✓ Max set point: 75°C degrees
- ✓ Fog: 380 ML/H

CUSTOMIZATION

- ✓ Customizable to meet specific customer needs

KEY FEATURES

- ✓ Standard Model (ESC-400L-TCH) : Mild steel powder coated body
- ✓ Controller : Intelligent microprocessor with Graphical LCD display
- ✓ Cabinet Dimensions W x D x H (mm) : 580 x 595 x 1925
- ✓ Temperature Range : 20°C to 75°C
- ✓ Temp Uniformity : $\pm 2^{\circ}\text{C}$
- ✓ Humidity Range : 40% to 95% RH
- ✓ Humidity Uniformity : $\pm 5\%$ RH
- ✓ Gross Weight (Kg): 98
- ✓ Volume : 400 Liter
- ✓ Number of Trays : 04





Stability Chamber

ESC-1000L-TCH is designed to meet the demanding requirements for scientific and laboratory research. **ESC-1000L-TCH**, an advanced engineered design incorporates the latest in cabinet, refrigeration, temperature control and monitoring features. Provides energy efficient, convenient, safe and reliable performance for optimal temperature environments necessary for a wide range of life science, pharmacy, biological, medical, clinical and industrial applications.

ESC-1000L-TCH units employ a programmable controller to maintain the temperature and humidity with accuracy of $\pm 2^{\circ}\text{C}$ and $\pm 5\%$ RH respectively. The cabinets utilize electrically operated heaters to warm the cabinets in the heating mode. Built in data logger with storage capacity of 6000 readings approximate, alarm system & printer connectivity are more distinguish features of **ESC-1000L-TCH**.

Technical Specification

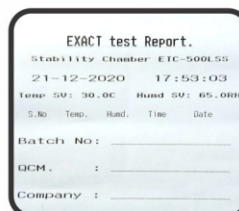
- ✓ Voltage supply: 230V AC 50HZ 1 phase
- ✓ Maximum fuse size: 16A
- ✓ Total Amp draw: 7.5 A
- ✓ Max set point: 75°C degrees
- ✓ Fog: 380 ML/H

KEY FEATURES

- ✓ Standard Model (ESC-1000L-TCH) : Mild steel powder coated body
- ✓ Controller : Intelligent microprocessor with Graphical LCD display
- ✓ Cabinet Dimensions W x D x H (mm) : 1200 x 685 x 2050
- ✓ Temperature Range : 20°C to 75°C
- ✓ Temp Uniformity : $\pm 2^{\circ}\text{C}$
- ✓ Humidity Range : 40% to 95% RH
- ✓ Humidity Uniformity : $\pm 5\%$ RH
- ✓ Gross Weight (Kg): 194
- ✓ Volume : 880 Liter
- ✓ Number of Trays : 05

CUSTOMIZATION

- ✓ Customizable to meet specific customer needs





Stability Chamber

ESC-500LSS-TCH is designed to meet the ever increasing requirements for scientific and laboratory research. ESC-500LSS-TCH, an advanced engineered design incorporates the latest in cabinet, refrigeration, temperature control and monitoring features. Provides energy efficient, convenient, safe and reliable performance for optimal temperature environments necessary for a wide range of life science, pharmacy, biological, medical, clinical and industrial applications.

ESC-500LSS-TCH units employ a programmable controller to maintain the temperature and humidity with accuracy of $\pm 2^\circ\text{C}$ and $\pm 5\%$ RH respectively. The cabinets utilize electrically operated heaters to warm the cabinets in the heating mode. Built in data logger with storage capacity of 6000 readings approximate, alarm system & printer connectivity are more distinguish features of ESC-500LSS-TCH.

Technical Specification

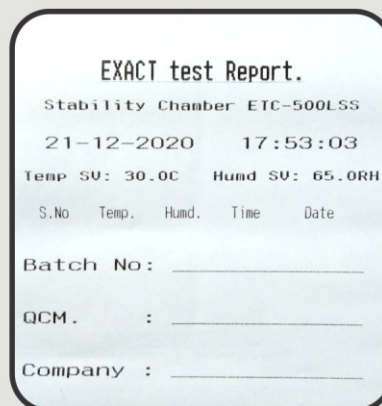
- ✓ Voltage supply: 220V AC 50HZ 1 phase
- ✓ Maximum fuse size: 16A
- ✓ Total Amp draw: 7.5 A
- ✓ Max set point: 75°C degrees
- ✓ Fog: 380 ML/H

CUSTOMIZATION

- ✓ Customizable to meet specific customer needs

KEY FEATURES

- ✓ Standard Model (ESC-500LSS-TCH) : Complete Body of Stainless Steel 304
- ✓ Cabinet Dimensions W x D x H (mm) : 665 x 725 x 2040
- ✓ Controller : Intelligent microprocessor with Graphical LCD display
- ✓ Temperature Range : 20°C to 75°C
- ✓ Temp Uniformity : $\pm 2^\circ\text{C}$
- ✓ Humidity Range : 40% to 95% RH
- ✓ Humidity Uniformity : $\pm 5\%$ RH
- ✓ Gross Weight (Kg): 120
- ✓ Volume : 15 CF
- ✓ Number of Trays : 05



Dispensing & Sampling Hood

DH-MD01 / SH-MD02

Dispensing Hood (DH-MD01) & Sampling booth (SH-MD02) has been designed to ensure protection for the product, operator and surrounding environment. The equipment is high performance, noise abated and dynamically balanced.



Key Features:

- Stainless Steel body
- Front PVC hanging curtains
- Pre-Filter- "5" Micron made of washable synthetic material
- Imported HEPA Filter, with an efficiency rating better than 99.99% for 0.3 μ
- Motor blower with adjustable speed
- Effective air circulation system for clean air
- Fluorescent LED Light fitting
- Universal electric socket with protective cover
- Working Bench for placement of weighing balance
- Internal Work Area dimensions available (W x D x H):

DH-MD01 (44" x 30" x 68")*

SH-MD02 (24" x 22" x 28")*

* Sizes can be customized according to the space & requirements



Leak Test Apparatus

The Organa-LT is used to test for the integrity of packed strips, blisters and small sachets containing tablets, granulates, liquids and so on. The instrument is used to test the quality of the packaging process and to check that the seals enclosing the product are perfectly intact. The Organa-LT is designed to find the smallest holes and imperfections in blister packs and other semi-rigid product packaging.

Model: Organa-LT



Salient Features:

- Test the integrity of strips, blisters and bottles
- Oil-free vacuum pump
- Stainless steel Body
- Adjustable vacuum release valve from the desiccators
- Non-breakable Acrylic covering sheet
- Desiccator Sizes 200mm or 230mm Ø (optional)
- Dimension L x W x H – 450 x 300 x 250 mm

Technical Specification:

- Vacuum Level > 650mmHg
- Timer Can be set from 0 Sec to 99 minutes
- Power Nominal 220 - 240V
- Fuse Size 1A

Friability Tester

The FTA-SD01 is a dual drum friability tester with a constant speed of 25rpm for basic testing requirements. Designed in accordance with the specifications as laid down in USP and other Pharmacopeia.

Model: FTA-SD01



Salient Features:

- Dual drums with quick-change load system
- Fixed speed 25 rpm
- Single/double (Optional) Drum
- Drum is made from good quality Acrylic Sheet
- Testing mode – Time
- Dimension L x W x H – 13" x 8.5" x 9.5"

Technical Specification:

- Voltage supply: 230V AC 50HZ 1 phase
- Maximum fuse size: 1A
- Total Amp draw: 0.25-0.5 A
- Range of Time: 1 Sec-99 Hours



Disintegration Tester

EX-DT-V1A

Efficient: Quickly conduct sequential or simultaneous disintegration tests. The two basket system allows for multiple independent operations, even while the system is unattended.

Compliant: Be confident knowing your EX-DT-V1A disintegration baskets, disk and vessels meet current USP specifications for disintegration testing.

Integrate: Eliminate the need for separate auxiliary components. Our disintegration apparatus integrates the drive system, water bath and heater/circulator within a single platform.

Compact: The disintegration apparatus EX-DT-V1A is designed to save valuable laboratory bench space.

Temperature	5 to 40 °C
Altitude	0 - 2000 m (0 - 6562 ft.)
Humidity	<80% RH
Voltage	220 V / 50 Hz
Current	2 Amp
Fuse	5 Amp
Stroke per minuet	30 ± 1 SPM
Stroke length	55 ± 2 mm
Water bath temperature range	Ambient to 50 °C
Water bath temperature accuracy	± 0.2 °C
Beaker volume	1000 ml
Beaker dimension	ID: 97-115mm H: 138-160
Test duration/display format	hh:mm:ss programmable upto 99:59:59
Keypad	Sealed switch type
Printer	impact
Dimensions	HxWxL(12x11x20)in (30.4x28x50.8)cm
Weight	10 kg dry with baskets



Compact entry-level device



Easy control via a large LED display



Continuous heating of water bath by flow-through heater



Tool free assembly and disassembly



2 independent test stations



100 % USP / EP / JP compliant



Melting Point Apparatus

Model: MS-MP-V1

Automatic Melting Point

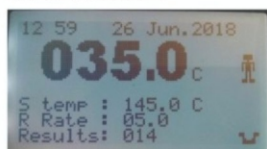
The Melting Point Apparatus (MS-MP-V1) is designed to automatically measure and record the melting temperatures of crystalline samples held within capillary tube. A tube can be accommodate in an illuminated chamber within an aluminum block.

Sample Chamber

On the top of the apparatus there is a hole for material testing capillary tubes. This Melting point apparatus can hold single tube at a time.

Display

All operations showed on the 240x128 graphic LCD. You can watch current temperature, time and date, set point and ramp rate on the screen.



Printer Port

A serial port is used for thermal printer. Only 3" printer slip can be used. You can print required result by pressing the print button on the log menu.

Buttons

Buttons are used to operate the apparatus. You can control all options of melting point through these buttons.

Power Plug

Power plug is placed at the back of the apparatus. Melting point apparatus (MS-MP-V1) support 110 to 250V, 50-60Hz power source.



Technical Specification

Melting Point Apparatus (MS-MP-V1)

No. of sample	1 sample per test
Temperature range	Ambient to 400 C
Temperature resolution	0.1 C
Display	240 x 128 Graphic lcd
Ramp rate	0.5-25 C in 0.1 C resolution
Temperature sensor	K type thermocouple
Cool down time 350-50 C	~15 min
Heat up time 50-350 C	~12 min
Oven control	Closed loop PID
Sample level	4-6mm in 50 or 100 mm length capillaries
Electric supply	110-250 V, 50-60 Hz
Temperature unit	C
Size(h x d x w)	90 x 300 x 230 mm
Net weight	3.5 kg
Language	English



Refurbished Equipments

UV & HPLC

UV-Visible Spectrophotometer

Shimadzu-Japan - Model no. 1601

- Double beam (UV- Vis) detector
- Inclusive of analysis software



HPLC Perkin Elmer – Series 200

- Series 200 – Binary Pump
- Series 200 – UV- Visible Detector
- Column Oven & De-gasser
- Auto Sampler
- Original Perkin Elmer Software with Key

Fabricated Products

Organa Customized

Material Storage Cupboard

Racks

Portable Table

Storage Drum

Dies & Punch Cabinet



Laboratory Counter & Workstations

Employees Locker



Material Transfer Trolleys



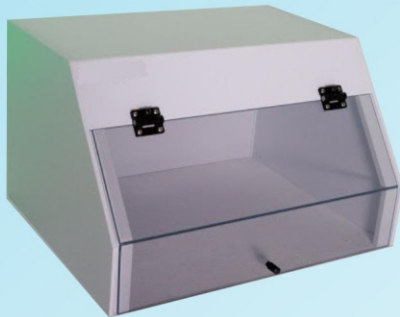
Organa Fabrication Range

Organa Customized



Auto Clave

- Vertical Loading
- Pressure and heat display



TLC viewer

- Portable Model
- Light weight, durable plastic
- UV lamp



Pass Box

- Whole Organa Pass Box body is constructed of stainless steel
- Reliable Mechanical Interlock
- Easy to clean
- Glass doors provide a clear view of the internal chamber
- Maintains cleanroom integrity by preventing both doors from being opened at the same time



Sieve Shaker

- Local Fabrication
- Sieve Set, Head and Pan
- Coated body, fixed speed

Laboratory Equipments

Organa Imports



Hot & Cool Incubator

- Temperature range of 0-65°C.
- Power coated body
- Capacity – 32 or 50 liters



Viscometer

- Low cost and easy to use
- Direct display in: cP or mPa·s, % Torque, Spindle, and Speed
- Torque measurement accuracy: 0.5 % of full scale range
- Repeatability: 0.2% of full scale range
- Variable speeds for greater range capability (0.3 to 100 rpm)



Hot Plate with Magnetic Stirrer

- Maintenance & wear free, fast electrical heating
- Single point stirrer
- Stirrer Volume (500 ml)
- Speed range (100rpm)
- Max Temperature 200°C



Muffle Furnace

- High Temperature Furnace.
- Temperature control (Max. 1000 °C)
- Digital Temperature Display.
- Temperature Accuracy of 5 °C



Abbe Refractometer

- Non Digital, scale type
- Refractive Index range 1.3000 to 1.7000,



Refractometer

- Handheld Model, manual detection
- Light source- White
- Internal graduated scale, plastic cover



Laboratory Equipments

Organa Imports



Centrifuge Machine

- Variable speed 0-4000 r/min
- Capacity 20ml x 6 tubes



Radwag Poland - Model MA 110.R

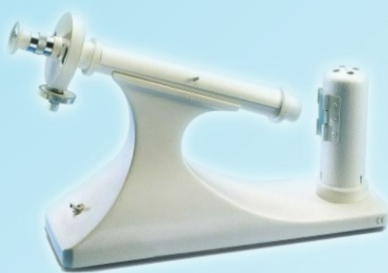
Moisture Analyzer

- Max capacity [Max] 110g
- Moisture readout accuracy 0.0001 %
- Moisture content repeatability +/-0.05% (sample ~ 2g), +/-0.01% (sample ~ 10g)
- Software controlled with data memory, multiple profile options, halogen lamp.



TLC Apparatus

- TLC plates (Merck), developing jar, and capillary tubes
- High Quality Glass ware



Polarimeter

- Manual Bench Top Model
- Measuring range 2 semi-circles (0-180°)
- Glass tubes 100 and 200 mm Scale division 1°
- Reading precision 0.05° (with nonius)
- Light source LED
- Dimensions in cm 14.0 x 33.0 x 50.0



Conductivity Meter

- Professional Multi parameter conductivity meter.
- Bench top model, with ATC (automatic temperature compensation) mechanism.
- Calibration time out alarm system, automatic hold feature
- 12 V power supply, assorted probes.



pH Meter

- Professional Multi parameter pH meter.
- Bench top model, with ATC (automatic temperature compensation) mechanism.
- Calibration time out alarm system, automatic hold feature, and last calibration data review
- 12 V power supply, assorted probes.
- Range -2.00 to 16.00 pH, resolution 0.01 pH, and Accuracy 0.01 pH



Laboratory Equipments

Organa Imports



Microscope

- Binocular with lamp, eye piece & objective
- Bench Top model, powder coated body
- With ocular & Stage Micrometer



Industrial Scale

- Capacity 250 kg
- Platform Dimensions 18 x 18
- Stainless Steel



Water Bath

- 4 or 6 Cavity water bath, digital display of temperature
- Effective uniform heating, Temp range (0-100°C)



Colony Counter

- Digital Display
- 6X Magnifying glass
- High Resolution light.
- Digital counting mechanism



Sonicator (Ultrasonic Bath)

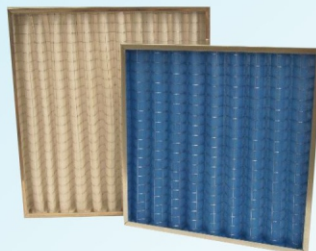
- Capacity-2, 3, 6 Liter
- Adjustable Time
- Temperature range 5-60°C
- Ball valve with handle



Air Purification Unit

- Standalone unit, Class 3 HEPA Filter for 99.999 % percent pure air
- Filtration capacity for 160 sq. ft area.
- Noise & maintenance free unit.
- Filter life of 1.5 years

Filters



Organa[®]
International
Excellence Delivered...

Meet the Team

We have a multidisciplinary tag-team that works round the clock to offer best quality services to our esteemed customers

Technical Team

Osama Afzal

Mechanical Engineer
MBA Marketing
12 Years Experience in industry

Waleed Munir

Mechanical Engineer
MS Mechanical Design
12 Years Experience in industry

Process Team

Muhammad Shahzad

Doctor of Pharmacy
M.Phil Pharmacognosy

Waqas Naseer

Doctor of Pharmacy



+92 300 0662292, 332 4669234



sales.organa@hotmail.com, sales.organa@gmail.com

For Coffee

Sales Office: House# 8 Palace Street Canal Bank Harbanspura, Lahore

Head Office: P-9 Tufail Block, Canal Bank Housing Society, Lahore